

200 Wilmslow - Manchester Airport via Styal

Swans Travel

Sunday

Wilmslow Railway Station	0855	then	55	1655	1755
Wilmslow, Bank Square	0858	at	58	1658	1758
Quarry Bank Mill	0905	these	05	1705	1805
Styal Village	0908	mins	08	1708	1808
Moss Nook	0911	past	11	until	1711 1811
Manchester Airport Station	0916	each	16	1716	1816
Manchester Airport Viewing Park	0924	hour	24	1724	--

200 Manchester Airport - Wilmslow via Styal

Swans Travel

Sunday

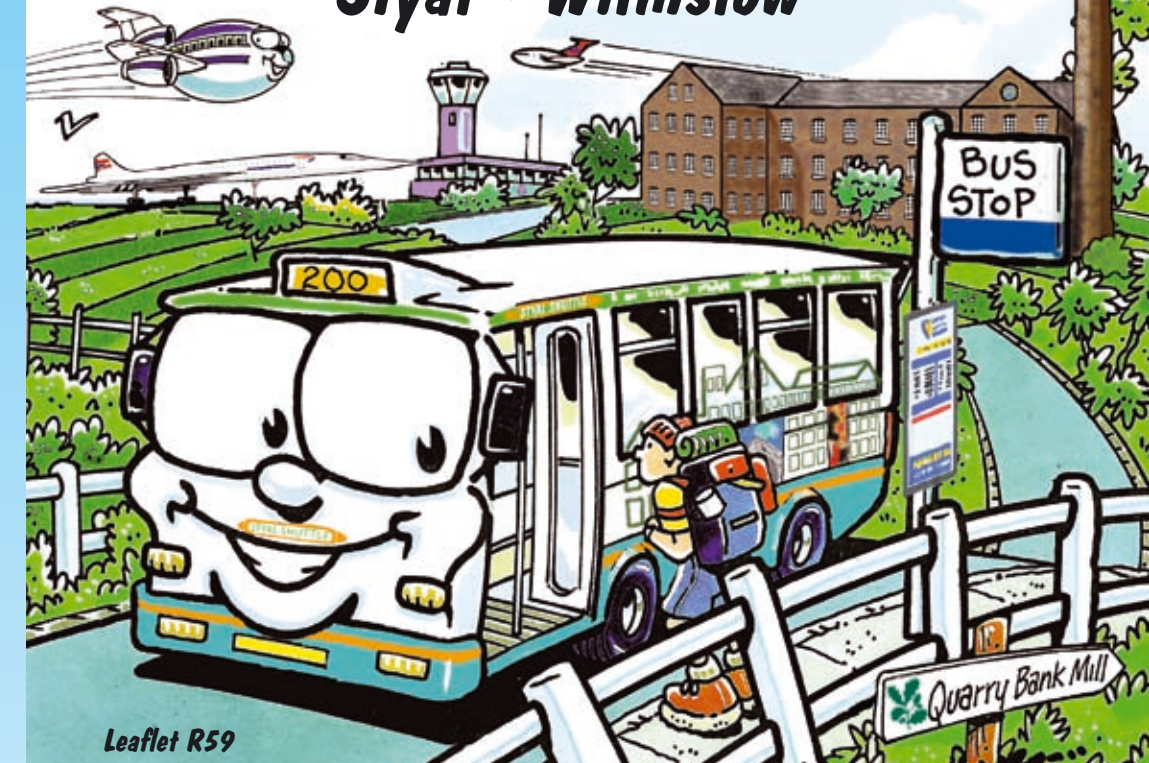
Manchester Airport Viewing Park	--	0925	then	25	1725	
Manchester Airport Station (dep)	0832	0932	at	32	1732	
Moss Nook	0836	0936	these	36	1736	
Styal Village	0839	0939	mins	39	until	1739
Quarry Bank Mill	0842	0942	past	42	1742	
Wilmslow, Bank Square	0849	0949	each	49	1749	
Wilmslow Railway Station	0852	0952	hour	52	1752	

Route: Service 200: Wilmslow Station, Station Road, Wilmslow Bank Square, Green Lane, Church Street, Chancel Lane, Cliff Road, Styal Road, Holt's Lane, Quarry Bank Mill, Hollin Lane, Styal Road, Ringway Road, International Approach (in), Malaga Ave, Airport The Station, Chicago Ave, Atlanta Ave, Hong Kong Ave, Singapore Ave, Melbourne Ave, Sydney Ave, Thorley Lane, Runger Lane, Pinfold Lane, Wilmslow Old Road.

Return via reverse of outward route to Airport The Station, Terminal Road North, Outwood Lane, Ringway Road West, Ringway Road, then outward route reversed. Certain journeys only operate from Wilmslow Bank Square, certain journeys only operate from Manchester Airport The Station.



**Your Styal Shuttle Bus Service
 Manchester Airport -
 Styal - Wilmslow**



Leaflet R59

For further local or national information, ring the Cheshire Traveline

0871 200 22 33

(Calls cost 10p per minute plus network extras)

Seven days a week 8am - 8pm

RNID Typetalk: 18001 0871 200 22 33 or email: traveline@cheshire.gov.uk

www.cheshire.gov.uk/transport

GIVE PUBLIC TRANSPORT A GO!

200
 Manchester Airport -
 Wilmslow via Quarry Bank
 Revised timetable from
 Monday 24th November 2008



200 Wilmslow - Manchester Airport via Styal

Swans Travel

Monday to Friday

Wilmslow Railway Station	0855	then at	55	1655	1755
Wilmslow, Bank Square	0858	these	58	1658	1758
Quarry Bank Mill	0905	mins	05	1705	1805
Styal Village	0908	past	08	until	1708 1808
Moss Nook	0911	each	11	1711	1811
Manchester Airport The Station	0916	hour	16	1716	1816

200 Manchester Airport - Wilmslow via Styal

Swans Travel

Monday to Friday

Manchester Airport The Station	0812	0932	then at	32	1732	
Moss Nook	0816	0936	these	36	1736	
Styal Village	0819	0939	mins	39	until	1739
Quarry Bank Mill	0822	0942	past	42	1742	
Wilmslow, Bank Square	0829	0949	each	49	1749	
Wilmslow Railway Station	0832	0951	hour	51	1751	

200 Wilmslow - Manchester Airport via Styal

Swans Travel

Saturday & Bank Holidays

Wilmslow Railway Station	0855	then	55	1655	1755
Wilmslow, Bank Square	0858	at	58	1658	1758
Quarry Bank Mill	0905	these	05	1705	1805
Styal Village	0908	mins	08	until	1708 1808
Moss Nook	0911	past	11	1711	1811
Manchester Airport Station	0916	each	16	1716	1816
Manchester Airport Viewing Park	0924	hour	24	1724	--

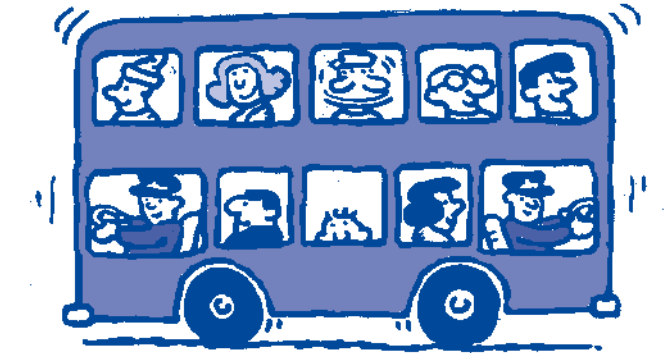
200 Manchester Airport - Wilmslow via Styal

Swans Travel

Saturday & Bank Holidays

Manchester Airport Viewing Park	--	0925	then	25	1725	
Manchester Airport The Station	0825	0932	at	32	1732	
Moss Nook	0831	0936	these	36	1736	
Styal Village	0834	0939	mins	39	until	1739
Quarry Bank Mill	0837	0942	past	42	1742	
Wilmslow, Bank Square	0844	0949	each	49	1749	
Wilmslow Railway Station	0847	0951	hour	51	1751	

**Before you buy a return ticket,
make sure they run a
return service**



Before you buy a return ticket always ask your driver or check in this timetable that the return journey you intend to make is operated by the same bus company.

If it is not then the return half of your ticket may not be valid and you will have to buy another ticket.

So remember, for a smooth journey always make sure your return ticket is valid for your return trip.

These services are supported by Cheshire County Council, the Government's Rural Bus Subsidy Grant & Manchester Airport with the National Trust.

Whilst every care has been taken in compiling this information, the bus times in this book are for guidance only.

Cheshire County Council will not be responsible for any loss, damage or inconvenience caused by an operating failure, or in consequence of any inaccuracies.

Large print versions of this timetable are available on request from the Cheshire Traveline.

